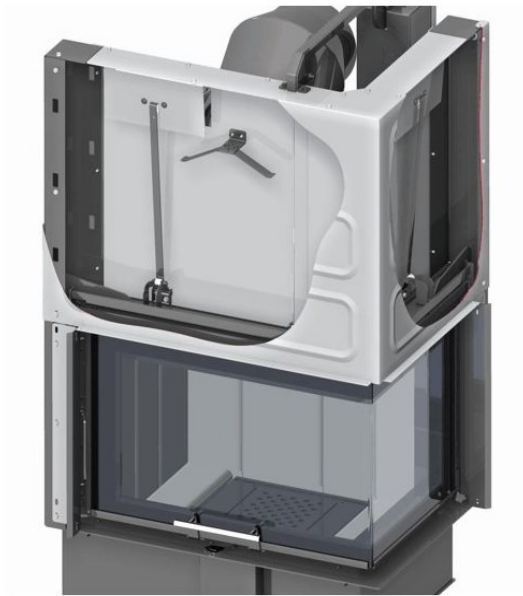


Convective ROMOTOP flaps

With the new Romotop inserts with the lifting door we decided to solve the lifting of the door so that the door is absolutely functional under all circumstances, also at the time when a customer exceeds the recommended hourly feed rate. In these situations it happens with common inserts with a sliding door that the rollers harden, eventually that the lubricant grease in the rollers dries up. Also, when we lift the door, we can expect rubbing of the rollers accompanied by unpleasant noise.

Romotop fireplace inserts from the Angle series are now equipped with convective RMT flaps that provide an effective air exhaustion of the upper sheathing and cooling of the rollers. After using the convective RMT flaps the temperature measured on the rollers of the door decreased within 100°C!





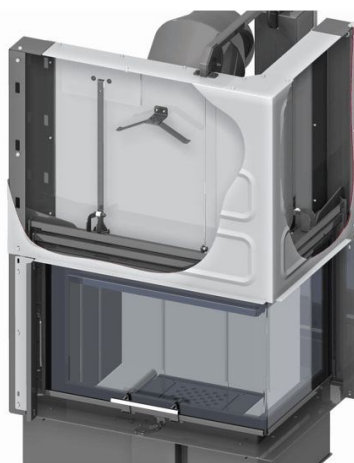
1- When the door of the combustion chamber is closed, the convective ROMOTOP® flaps are opened at 100 %. Thanks to that air can flow and the travels of the extending door mechanism can be cooled down.



2- When the door throws up, the convective ROMOTOP® flaps close up.



3- When the door is about 3 cm thrown up, the convective ROMOTOP® flaps are already totally closed and this prevents the smoke to get into the enclosure of the insert.



4- When the door moves up again, the convective ROMOTOP® flaps stay tightly closed in the whole length.